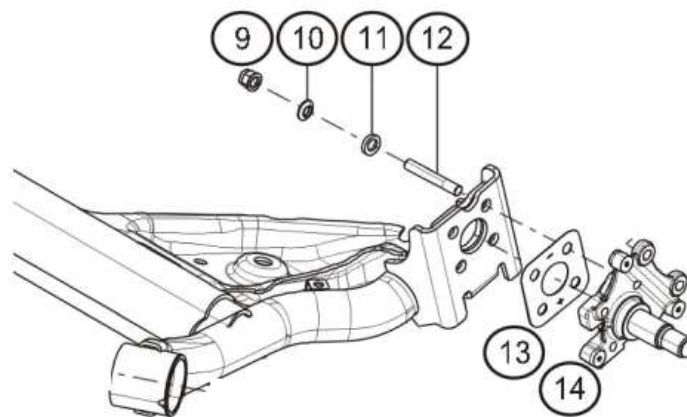


REFERENCE	BT_2013_X98CUP_04_UK
DATE	2013 May 06th
SUBJECT	Rear axle setup for IMOLA

CONCERNED : 2013 EURO CUP CLIO

Dear Competitors,

Due to a limited number of 1° shims (82 01 369 773) at the Renault Sport spare parts truck in IMOLA, the rear axle geometry will be regulated.



Camber :

Theoretical maximum camber allowed will be **4°50'**, obtained as explained below:

- Maximum 3 shims of 1° allowed per wheel → theoretical angle = 3°
- Maximum 2x30' shims per wheel to add 1° → total theoretical angle = 4°
- Then, to reach the maximum value of 4°50', you must respect the table below:

Camber required	Combinations allowed (per wheel)	Combinations forbidden (per wheel)
10'	1x10'	
20'	1x20'	2x10'
30'	1x30'	(3 x 10') or (1x20' + 1x10')
40'	(1x30' + 1x10') or (2 x 20')	4 x 10'
50'	1x30' + 1x20'	(5 x 10') or (1x20' + 3x10') or (2x20' + 1x10')

Toe :

Free

NOTE :

This regulation is provisory for the EURO CUP Clio meeting of IMOLA and will be modified after.